

06

EVERYONE CAN BE A LIFESAVER

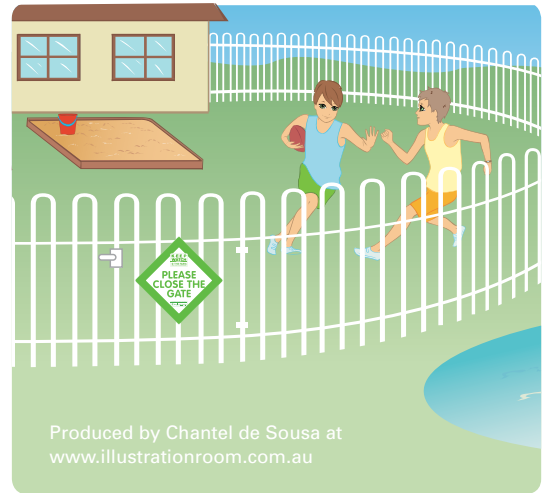


Royal Life Saving
ROYAL LIFE SAVING SOCIETY - AUSTRALIA



FACT SHEET No.06

Child Safe Play Areas



Produced by Chantel de Sousa at
www.illustrationroom.com.au

Q. What is a child safe play area?

A. A child safe play area is a carefully planned, designated location which is securely fenced and helps to prevent a young child from gaining access to water without adult supervision. Pool fencing requirements, including appropriate 'child resistant' gates and latches, can be used as a guide in planning a safe play area.

Q. Why are child safe play areas useful?

A. Child safe play areas are particularly effective for restricting a child's access to water you cannot fence. Therefore they are effective on farms where dams are used for stock and cannot be isolated. They can also be used both outside and inside the house and assist parents in being able to actively supervise children.

Q. Where can child safe play areas be used?

A. Child safe play areas have commonly been used on farms to prevent children from wandering into the farm environment or a farm dam without adult supervision. However, child safe play areas can also be used inside the home to keep children safe and prevent children from gaining access to the bathroom or other drowning hazards within the home.

Q. What are the features of an effective child safe play area?

A. A child safe play area should be securely fenced, without any water bodies or drowning hazards within it. It should contain children's toys and equipment to ensure it is a fun place children like to play in. It should be easily observable by parents and carers and be regularly maintained to ensure it is always in good working order.

Q. How should the fence/gate on a child safe play area be constructed?

A. The fence of the child safe play area should be made of materials that are sturdy and are not easily climbable by children. There should be no gaps between the fence and the ground and be high enough to prevent children climbing over them. The gate to the child safe play area should be self-closing and self-latching and should never be propped open under any circumstances.

Real Life Story - Dam Drowning Tragedy

A toddler has drowned in a farm dam in Victoria. The boy went missing from his rural family home and was found in a dam the following morning. He was last seen in the backyard of his family home and walked a kilometre to a dam on a neighbour's property, where he drowned. This tragic case highlights the importance of active supervision and restricting young children's access to water through the use of securely fenced child safe play areas.

ROYAL LIFE SAVING HAS DEVELOPED A NUMBER OF FACT SHEETS ON WATER SAFETY ISSUES IN AUSTRALIA.

Contact Royal Life Saving on: **1300 737 763**
or download them from: **www.keepwatch.com.au**

Child Safe Play Area Checklist:

- The area is securely fenced
- The area is regularly maintained
- The area is placed close to the home or inside the home
- Children are easily supervised when in Child Safe Play Area
- Not easily climbable
- Has a self-closing, self-latching gate
- No gaps under or through the fence

A SECURE AND WELL MAINTAINED CHILD SAFE PLAY AREA CAN PREVENT DROWNING

Proudly Supported by



Australian Government

Department of Health and Ageing